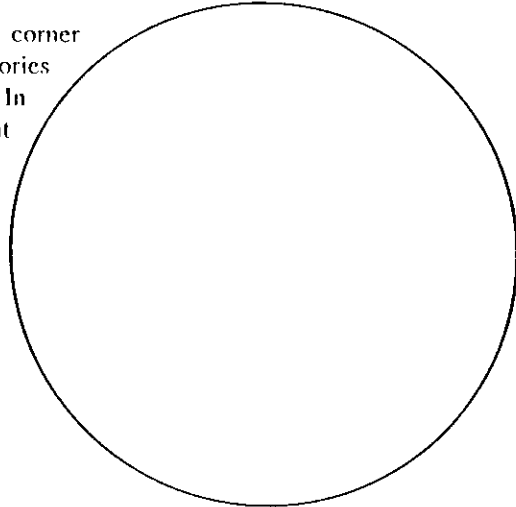


# Wyoming Certified Land Corner Recordation Certificate

*This form is to be completed in accordance with W.S. 36-11-101, printed in black ink or typed, and shall be for one individual corner.*

Describe below, or show in sketch attached to this form, the corner evidence found. Include condition and type of monument, accessories and ties. Describe any maintenance or rehabilitation performed. In the circle to the right, show monument inscription. If monument is determined lost or obliterated, restate the GLO or BLM original field note record; describe or show the procedure used to reestablish the corner and all data as above for a found monument.

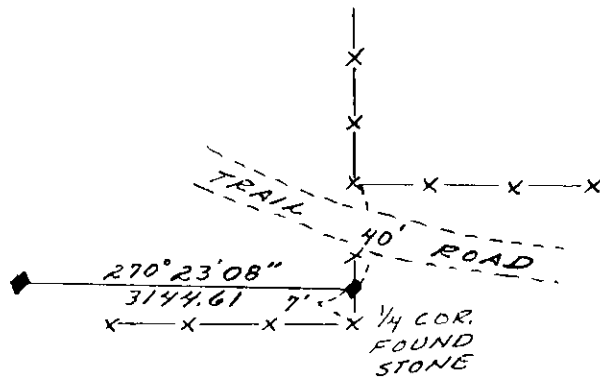


Field Date 3-1-90 Office Reference 90030

G.L.O. Record: set granite boulder 18"x 6"x 6".

Found: black granite stone 6"x 6" projecting 6" above ground with "1/4" marked on south face and "x" chiseled in top of stone.

### Monument Inscription



068133

RECEIVED  
LARAMIE COUNTY  
CHEYENNE, WY.  
'90 MAR 16 PM 1 43

### State of Wyoming

Office of County Clerk  
County of Laramie

This Certified Land Corner Recordation Certificate was filed for record on the \_\_\_\_\_ day of \_\_\_\_\_, 19 \_\_\_\_, in Book No. T 13N, R 70W, on Alpha-Numeric coordinates V-3 and was noted on the Cross Index Plat.

### County Clerk

Corner Type:  Aliquot Corner  Other Section(s) 30,31 Meridian 6th P.M.

Corner Name Quarter Township 13N Range 70W Page \_\_\_\_\_

Sheet \_\_\_\_\_ of \_\_\_\_\_

**Directions for using the  
Cross Index Plat**

Section, quarter and sixteenth corners will be marked with a dot at the corner location. The alpha-numeric coordinate number is then determined for the intersection of the two lines. A corner that applies to two or more townships shall be filed under all that apply by the use of photo copies.

Closing corners will be indexed under the township in which they control ownership. For 1/64, 1/256, 1/1024 and non-aliquot corners lying between grid designations, mark the appropriate grid area with a dot and use the index code to the north and west (local systems may be used if the method is approved by the County Surveyor or Clerk and a written description of its use is filed in the front of each book of certificates).

**Cross Index Plat**

	1	2	3	4	5	6	7	8	9	10	11	12	13	14	15	16	17	18	19	20	21	22	23	24	25		
A																											B
B	+	+	+	+	+	+	+	+	+	+	+	+	+	+	+	+	+	+	+	+	+	+	+	+	+	+	C
C	6					5					4					3						2					D
D																											E
E																											F
F																											G
G																											H
H																											I
I																											J
J																											K
K																											L
L																											M
M																											N
N																											O
O																											P
P																											Q
Q																											R
R																											S
S																											T
T																											U
U																											V
V																											W
W																											X
X																											Y
Y																											Z
Z																											

**State Plane Coordinates (optional)**

Zone            W    WC    EC    E            feet/meters

NAD 1927             NGVD 1929             NAD 1983             NAVD 1988

North (Y) = \_\_\_\_\_            East (X) = \_\_\_\_\_            EL = \_\_\_\_\_

Latitude \_\_\_\_\_            Longitude \_\_\_\_\_

Scale Factor \_\_\_\_\_            Geoid Height \_\_\_\_\_

**Certification**

I, John A. Steil, Wyoming PLS. # 2500 certify that I, or others under my supervision, have performed the work as described above and completed this form.

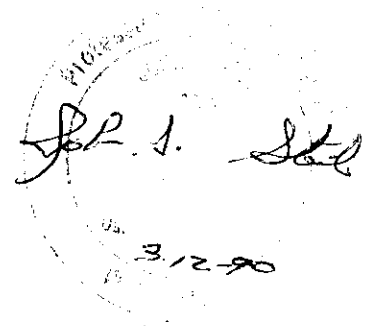
Company or Agency    Steil Surveying Services

Mailing Address        P.O. Box 2073

Street Address         200 E. 8th Ave.

City, State, ZIP        Cheyenne, WY 82003

Telephone, FAX         307-634-7273



Signature, Seal, and Date

Sheet \_\_\_\_\_ of \_\_\_\_\_